

TRIVITRON
HEALTHCARE
speaking your language



WHEN **SECONDS**
COME **FIRST...**

100,000+ INSTALLATIONS | OVER
1,500 EMPLOYEES | 1,200+ CHANNEL
PARTNERS | CLIENTS ACROSS 180
COUNTRIES | 15 US-FDA and/or CE
CERTIFIED MANUFACTURING
FACILITIES



ABOUT TRIVITRON

By combining innovation with affordability and accessibility, Trivitron is a leading healthcare technology & medical devices enterprise that has been operating for more than two decades to improve health and medical care throughout the world, like no one else. At Trivitron, quality healthcare is considered as a fundamental right of people and pledge to make top-notch, cutting edge healthcare technology available for people of all classes.

Trivitron lay great emphasis on research and development. Our team includes internationally acclaimed experts and leading scientists who innovate unprecedented health technologies suitable for healthcare needs of today and tomorrow.

Trivitron provide technological advancements to hospitals, individual healthcare providers, independent clinics, extended care facilities and laboratories, catering to healthcare needs in multiple verticals like –



Medical Imaging Solutions



In-Vitro Diagnostics (IVD)



Covid-19 Detection & Cure Portfolio



Radiation Protection Products



Newborn screening (NBS)



Critical Care & ICU Solutions

Through a growing network of 1,500+ employees, 1,200+ channel partners and 15 world-class manufacturing units in India, USA, Finland, Turkey & China, Trivitron Healthcare is reaffirming its commitment to offer superior health technologies in 180+ countries saving lives and improving care and have been serving 100,000+ healthcare institutions across the world.

By simplifying and expanding our business, Trivitron is rapidly moving to establish themselves as a global leader in medical technology. Trivitron is committed to build a sustainable business that delivers value by offering best available health technology solutions for millions of people worldwide.



**100,000+
Installations**



**Over 1,500
Employees**



**15 Manufacturing
Facilities**



**1,200 Channel
Partners**



**Client Across
180+ Countries**



GLOBAL MANUFACTURING FACILITIES

With 15 manufacturing facilities, Trivitron occupies an enviable position in the healthcare industry by producing a wide range of equipment, laboratory reagents, diagnostic kits and even protective apparel for radiology departments. the products are used in health care setups and hospitals across the world.



CE / US FDA certified Kiran Medical Systems at Mumbai facility manufactures and exports Radiology accessories, components & Radiation Protection Products.



AERB approved manufacturing facility at Kiran Mumbai & Pune manufactures and exports imaging products like X-Ray, C-Arm & Mammography to various countries.



CE/JGMP certified ATMT manufactures and exports over 1000 Ultrasound Machines every year.



Biosystems & Trivitron joint venture facility located at TMTP manufactures & exports a wide range of Biochemistry Reagents.





CONTENTS

Ventilator	08
HFNC	13
Point-of-Care Ultrasound	15
Patient Monitor	16
Infusion & Syringe Pump	24
ECG	28
Biphasic Defibrillator	30
Foetal Monitor	32
Suction Machine	34
Anesthesia Workstation	36
Dialysis	38
Anatomage	40
Intensive Care Consumables	42
Cardiac Assessment System	44



VENTILATOR

MTV1000

Multi-Purpose ICU Ventilator

"Extreme flexibility without compromising places and quality of care with ease"

Multi Purpose, Compact

MTV1000 Offer innovated convenience Unique technology with high performance Affordable and Reliable Ventilators with Compliance to International Quality Standards

- Multi Purpose Ventilator (Ambulance, ER, ICU)
- 7" Color TFT, Touch Screen & Knob
- Built in Ultra Quite Turbine Technology
- 3 Hours Battery Backup as Standard Feature
- High pressure Oxygen and Low Flow Oxygen
- NIV /Mask ON/OFF in All Modes
- Proximal Pressure Monitoring
- High Flow



Modes : PACV, PSIMV, VACV, VSIMV, SPONT+PS/CPAP, Auto, PRVC, Smart Apnea Back up

Optional* : SpO2 / ETCO2, Proximal Pressure Monitoring, Nebulizer
with Additional Battery : Over 6 hours Back up



■ Inspiration® 7i Ventilator Flagship Configuration



- Applications: Neonate through adult (2ml Tidal Volume)
- NIV in all Modes
- Auto Control for easy Weaning
- 3 Waveform and 3 Loops
- Recruitment Maneuver, Tube Compensation, SBT and Suction Support
- Smart Nebulizer with User selectable duration and Interval
- High performance PSOL and active exhalation
- 72 Hours Graphical and Tabular Trend for 31 Parameters
- Capnography ready
- Outstanding Heliox Management
- Optional : Remote Viewing System with CLININET™ HL7 GATEWAY™



- The Inspiration Ventilators are highly versatile and designed with the clinician in mind



eVolution® 3e Ventilators



- 2ml Tidal Volume
- Applications : Adult through Neonate
- Easy to use with 12.1" Large Display touch screen user interface
- NIV in all Modes
- Auto Control for easy Weaning
- Smart Nebulizer with User selectable duration and Interval
- High performance PSOL and active exhalation
- 72 Hours Graphical and Tabular Trend for 31 Parameters
- Optional: Volumetric Capnography Monitoring
- Optional : Remote Viewing System with CLININET™ HL7 GATEWAY™

Available in Two Variants: External Compressor based / Built In Turbine based Technology



- The eVolution 3e Ventilators are new paradigm shift in ventilator design.





HFNC

ECVENT HFO

High Flow Oxygen Therapy



- Advanced humidity control with minimum condensation
- Proprietary anti-cross infection design without extra work on disinfection
- High flow (2-80 LPM)
- Accurate flow control (< 0.5 LPM)
- Intuitive User Interface with Color LCD Touch Screen
- Full range patient interface (Nasal Cannula, Nasal Mask, Full face Mask & Tracheostomy Interface)

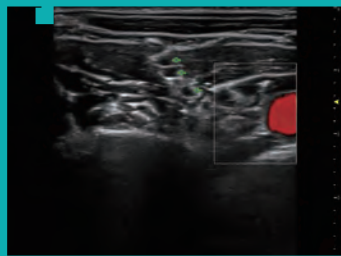
A photograph of two surgeons in an operating room. The surgeon on the left is a woman wearing a blue surgical cap, mask, and green scrubs, looking at a portable ultrasound machine. The surgeon on the right is a man wearing a blue surgical cap, mask, and green scrubs, performing a procedure on a patient. The patient is lying on a table, covered with a green drape. The ultrasound machine is on the left, displaying a B-mode image on its screen. In the background, there are medical monitors and equipment.

POINT-OF-CARE ULTRASOUND



Trivitron launches a Premium Point-of-Care Ultrasound Solution with the cutting -edgetechnology for precise navigation improving quality of care and patient safety during crittical care procedures. Focusing on every detail, Navi is designed to be indispensable as previously difficult tasks become routine with sight

- 19-inch full touch screen with liquid disinfection support
- Best in industry, 7 hrs battery backup
- Remote control probes
- Motorized height adjustment
- wiNeedle – Intelligent Needle Enhancement
- wiLearn – Education Center



A close-up photograph of a hand wearing a white latex glove, pointing its index finger towards a patient monitor. The monitor screen is out of focus, showing a blue waveform, likely an ECG, with some numbers like '4' and '0' visible. The background is a blurred clinical setting with a wooden door and a white wall. A teal-colored rectangular box is overlaid on the bottom left of the image, containing the text 'PATIENT MONITOR' in white, bold, sans-serif capital letters.

**PATIENT
MONITOR**

iVita12V



- Standard Configuration : ECG, PR, SPO2, NIBP & Resp
- 12.1" high resolution TFT
- Suitable for Adult, Pediatric and Neonatal application
- Arrhythmia / ST Segment Analysis
- Huge Storage / Trend data
- Connectivity with CNS
- Upgrades : Dual IBP, ETCO2 (Sidestream / main stream)

iVita15V



- Standard Configuration : ECG, PR, SPO2, NIBP & Resp
- 15" LED Touch screen
- Battery: Rechargeable high-energy built-in battery
- Streamline design that is portable, compact and lightweight
- High end upgrades of BIS, AG, ICG, CO etc.
- Nurse Call System Connectivity
- Upgrades : Dual IBP, ETCO2 (Sidestream / main stream)

iVita K10



iVita K12



- Standard Configuration : ECG, PR, SP02, NIBP & Resp
- 10.4" high resolution display Touch screen optional
- User customized NIBP measuring cycles up to 5-phase
- 9 traces on-screen waveforms and maximal up to 13
- H17 protocol, Bed to bed view and available

- Standard Configuration : ECG, PR, SP02, NIBP & Resp
- 12.1" high resolution display Touch screen optional
- 9 traces on-screen waveforms and maximal up to 13
- H17 protocol and Bed to bed view
- User customized NIBP measuring cycles up to 5-phase
- Upgrades : Dual IBP, ETCO2 (Sidestream / main stream), Nellcor SpO2, SunTech NIBP, Cerebral State Monitoring, Central Monitor Station

iVita K15



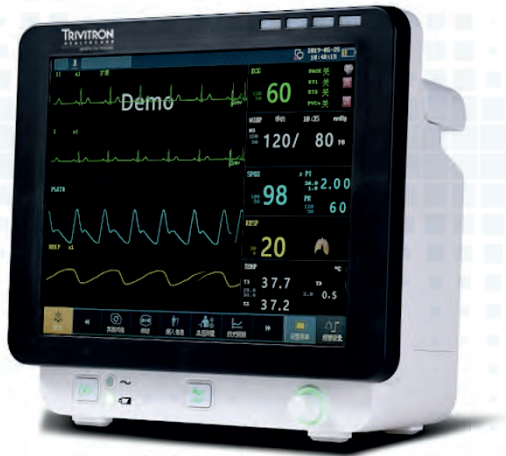
iVita K12-M



- Standard Configuration : ECG, PR, SP02, NIBP & Resp
- 15" high resolution display Touch screen optional
- 9 traces on-screen waveforms and maximal up to 13
- HL7 protocol and Bed to bed view
- User customized NIBP measuring cycles up to 5-phase
- Upgrades : Dual IBP, ETCO2 (Sidestream / main stream), Nellcor SpO2, SunTech NIBP, Cerebral State Monitoring, Central Monitor Station

- Standard Configuration : ECG, PR, SP02, NIBP & Resp
- 12.1" High Resolution display
- Plug and play Modular design for on site upgrade
- Adult/Pediatric/Neonate measurement modes
- 2000 hrs of trends
- Upgrades : Dual IBP, ETCO2 (Sidestream / main stream), Cerebral State Monitoring, Central Monitor Station

iVita 12H



- Standard parameters: ECG, NIBP, RESP, PR, SpO2, TEMP
- Clear 12.1" TFT screen with backlit buttons
- Ambulatory blood pressure technology, anti-movement
- 15 kinds of drug dose calculation
- Various languages operating systems
- 3 level Audible and visual alarming

iVita 10H



- Standard parameters: ECG, NIBP, RESP, PR, SpO2, TEMP
- Clear 10.4" TFT screen with backlit buttons
- Ambulatory blood pressure technology, anti-movement
- 15 kinds of drug dose calculation
- Various languages operating systems
- 3 level Audible and visual alarming

iVita 17H



- Standard parameters: ECG, NIBP, RESP, PR, SpO2, TEMP
- 17" TFT LCD Screen
- Plug and play Modular design for on site upgrade
- 15 drug concentration analysis
- 96 hours graphic and tabular trends of all parameter
- USB data storage and review

iVita 15H



- Standard parameters: ECG, NIBP, RESP, PR, SpO2, TEMP
- 15" TFT LCD Screen
- Plug and play Modular design for on site upgrade
- 15 drug concentration analysis
- 96 hours graphic and tabular trends of all parameter
- USB data storage and review

iVita O2 Plus



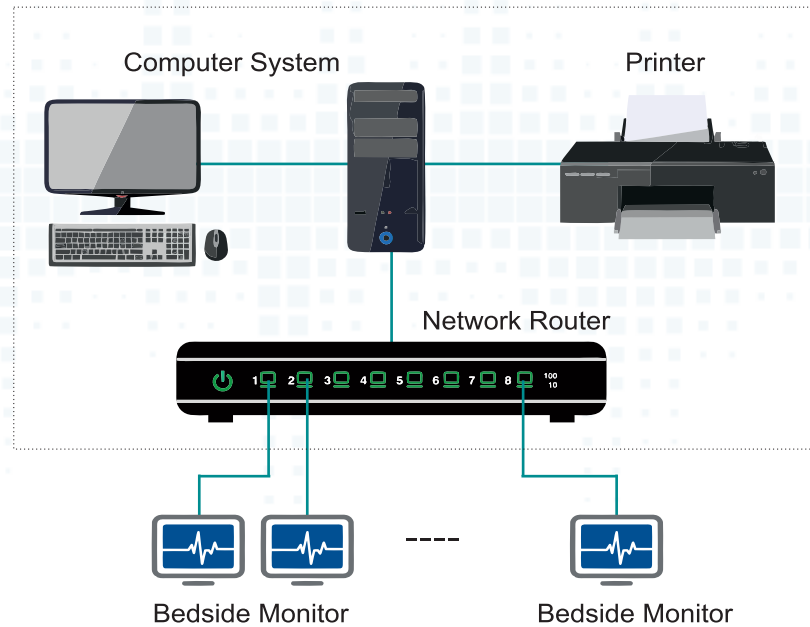
iVita O2 ft



- Available In two variants- SpO2 and SpO2+NIBP
- 4.3" high resolution color TFT LCD display. Compact & portable in design, allowing for uninterrupted monitoring.
- Continuously real-time display SpO2, PR, SpO2 plethysmogram, bar graph, SpO2 and PR trend graph
- Adopting digital SpO2 technology which has strong anti-interference capability.
- Standard adult finger-clip probe, binding probe for neonatal patients is optional
- Applicable to adult, paediatric and neonatal patients.

- Universal display with convenient detection
- Measures blood oxygen saturation and pulse rate
- Anti-motion technology
- Reduced power consumption

Central Nursing System (CNS)



- Support any size of screen, single screen for monitoring 32 beds, and dual screen for monitoring 64 beds, maximum 128 beds.
- Powerful anti-interference network signal.
- Pure central operating system, no software interference.
- Humanized operating interface, simple and clear.
- Comprehensive View of Patient Information

A close-up photograph of a patient's arm, wearing a blue hospital gown, with an IV line and a syringe pump attached. The patient has dark blue nail polish. The background is blurred, showing a hospital setting. A teal banner is overlaid on the lower left of the image.

INFUSION & SYRINGE PUMP

Intrafuse⁺



Intrafuse *Grand*



- Applicable for adult, Paediatrics and NICU (Neonatal).
- Anti-free-flow function to make infusion safer.
- Real-time display of infused volume / bolus rate / bolus volume / KVO rate.
- Change flow rate without stopping the pump.

- 4.3 inch color touch screen
- Electric door & electric anti-free flow clip
- History record more than 5000 logs
- 9 hours battery back-up time
- Ip24 waterproof

Flogard⁺



Flogard *Grand*



- 10, 20, 30, 50/60 ml Syringe Applications
- Drug library with the most used drugs
- History record review and last configuration memory
- Anti-bolus system
- Micro flow rate of 0.1ml/h and Body weight mode to satisfy the requirement for Neonatal/ Paediatric

- 2/3, 5, 10, 20, 30, 50/60 ml syringe application
- Drug library with most used drugs
- 4.3 inch color touch screen
- History record more than 5000 logs
- 12 hours battery back-up time
- Ip24 waterproof

Stackable Workstation



- Free style stackable 2, 4, 6, 8 channel modular design
- Intelligent Infusion Relay Mode
- Information & alarm management
- Integrate with hospital HIS system

ECG

iBeat 3V Pro



- Simultaneous 12 leads ECG acquisition and display
- 7 inch 800x480 TFT color LCD
- Alpha-numeric keyboard
- Built-in 4G SD card, save up to 10,000 ECG reports in XML/PDF/BMP format (optional)
- Pacemaker detection
- Precise ECG auto-interpretation program
- USB Slave port can be connected to PC-ECG software (optional)

iBeat 12V *Grand*



iBeat 12V *Pro*



- Simultaneous 12 leads ECG acquisition and display
- Printing on 210 mm / 213 mm thermal paper (Roll or Z-fold)
- 10 inch 800x480 TFT color LCD
- Built-in 4G SD card, save up to 10,000 ECG reports in XML/PDF/BMP format (optional)
- Pacemaker detection
- Precise ECG auto-interpretation program
- USB Slave port can be connected to PC-ECG software (optional)

- 7" color LCD display with 12-lead simultaneous acquisition
- Printing on 210 mm / 213 mm thermal paper (Roll or Z-fold) or A4 size
- Quick acquisition and stability, waveforms get stable within 3s
- Cine-loop function: saved ECG waveform can be played back
- Support magnetic card reader, bar code scanner, transferring information conveniently



**BIPHASIC
DEFIBRILLATOR**

iJiva Plus



iJiva AED



- Adult and Pediatric use with quick convert paddles
- Energy levels selection upto 360 joules with 7 sec charging time
- Builtin AED and thermal printer
- SpO2, ETCO2, NIBP and Pacer upgrade
- 65 hours of all parameter data storage

- Three step defibrillation process
- Two button operation
- Extensive voice and visual prompt for the operator
- Biphasic energy output
- Lock-out protection to prevent inadvertent defibrillation
- PC-based event review (Optional)

FOETAL MONITOR

ibaby 12x



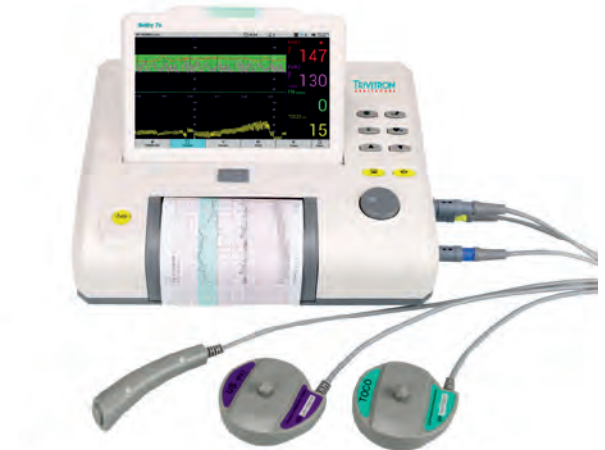
- High Resolution, 12" TFT color screen that folds upto 90 degrees
- Extensive Data Storage Memory with Playback and Print
- DSP Technology & Real-time identifying and measurement for FHR that provide accurate and reliable results
- Automatic Foetal Movement Detection and Accounting

ibaby 10x



- 10.2inch LED color display
- Flexible, Light Weight, easy operation
- 0 to 90 degree foldable screen
- Simultaneous maternal and fetal parameters display
- Data storage, Review and Print option
- Fetus wakeup option
- Parameter: FHR, TOCO, FM, Thermal Printer
- Options: Twins probe, ECG, SP02, NIBP, Resp, Temp

ibaby 7x



- High Resolution, 7" TFT color screen that folds upto 90 degrees
- Special High Sensitive Probe
- Extensive Data Storage Memory with Playback and Print
- DSP Technology & Real-time identifying and measurement for FHR that provide accurate and reliable results
- Automatic Foetal Movement Detection and Accounting
- CTG Scoring system: Krebs score/Fischer Score



SUCTION MACHINE



iVac 60

- Capacity: -730mmHg \pm 10 at 55 ~ 60 LPM
- Overflow Protection: Mechanical Type
- Tubing: Non – Collapsible Suction Tubing
- Vacuum Gauge: 2.0 inch, 0-760 mmHg
- Filter: Bacterial Filter Autoclavable / Reusable
- Pump Type: Oil Free Twin Headed Piston Pump



iVac 40

- Capacity: -710mmHg \pm 10 at 32 ~ 35 LPM
- Overflow Protection: Mechanical Type
- Tubing: Non – Collapsible Suction Tubing
- Vacuum Gauge: 3.0 inch, 0-760 mmHg
- Filter: Bacterial Filter Autoclavable / Reusable
- Pump Type: Oil Free Twin Headed Piston Pump

A photograph of an operating room with two surgeons in blue scrubs and masks. A teal semi-transparent box is overlaid on the left side of the image, containing the text 'ANESTHESIA WORKSTATION'.

ANESTHESIA WORKSTATION



V VENT 2000

- Modes: VCV, SIMV, Manual
- Adult and Pediatric application
- 10.1 inch screen
- Real-time detection for loops, Paw, BPM, VT and compliance
- Comprehensive monitoring capabilities include ventilation parameters monitoring, preset parameters, alarm indication and breathing waveform monitoring.



V VENT 3000

- Modes: VCV, A/C, PCV SIMV, Manual
- Adult and Pediatric application
- Tidal volume starting from 20 ml upto 1500 ml
- Adjustable PEEP 3 - 30 cmH₂O, Off
- 10.1 inch screen with no dead space.
- Real-time detection for loops, Paw, BPM, VT and compliance
- Comprehensive monitoring capabilities include ventilation parameters monitoring, preset parameters, alarm indication and breathing waveform monitoring.

A close-up photograph of a person's hands wearing purple nitrile gloves, holding a syringe with a red plunger and needle. The syringe contains a small amount of red liquid. The background is a blurred clinical setting, likely a dialysis unit, with various medical equipment and tubing visible. A teal-colored rectangular box is overlaid on the bottom left of the image, containing the text "RENAL CARE" in white, bold, uppercase letters.

RENAL CARE



Hemodialysis Machine

- Single pump single needle (Click-clack)
- UF/Conductivity profile
- Level adjuster pump for chambers
- Kt/V calculation
- Concentrate nozzle rinse
- Blood pressure monitor
- Central concentrate supply
- Bicarbonate cartridge holder
- Network connection

Dialysers

- A Complete range of Low Flux Polyethersulfone Hollow Fiber Dialysers
- Excellent biocompatibility
- Stronger ability to remove toxins
- High clearance rate of the molecules with small molecular weight
- Better anticoagulant property



ANATOMAGE



Anatomage Virtual dissection table

ANATOMAGE TABLE Hailed as the world's first and only life-size virtual dissection table, the Anatomage Table opens indefinite possibilities for both education and healthcare industries, whether it's for medical research, training, or education. Containing real human cadavers, along with the physiology functionality, the Anatomage Table allows users to interact with not only medically accurate anatomy but also interactive physiology elements.:

- Four photo realistic cadavers
- Human anatomy/accurate gross anatomy
- Physiology simulation and pathway visualization
- Case Library with 1300+ 3D-rendered CT, MRI, and X-Ray Images
- Classroom, course, and lab integration
- The ability to upload new MRI and CT scans or use the built-in case library
- Quiz modes for self-assessment, or for course assessment (quizzes may be password protected)
- Radiological imaging work station
- Animal case models
- Digital Pregnancy
- Living Bodies
- High-Resolution of Regional Anatomy
- Improved Rendering Visualization
- Optometry Applications



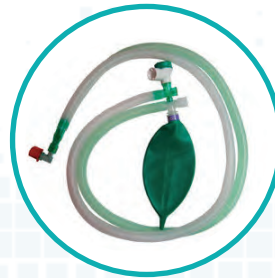
INTENSIVE CARE CONSUMABLES



Ambu Bag



HME Filter



Bain Circuit



**Breathing
Circuit**



**Monitor
Accessories**



**Cpap Nasal
Mask**



Flow Sensor



**Full Face
Mask**



Test Lung



IBP Kit



ESU Pencil

A close-up photograph of a hand holding a printed ECG (heart rate) strip. The strip is white with a red grid and shows a single lead tracing in red ink. The tracing consists of a series of P waves, QRS complexes, and T waves. The hand is holding the strip from the right side, with the thumb visible. A teal-colored rectangular overlay is positioned on the left side of the strip, containing the text "CARDIAC ASSESSMENT SYSTEM" in white, bold, sans-serif capital letters. The background is blurred, showing what appears to be a medical setting.

CARDIAC ASSESSMENT SYSTEM



TMT

- Data reviewed beat to beat with full disclosure for each case.
- No constraint on the number of cases stored for review.
- Manual selection of Enlarged median.
- ST - Win enables automatic computation of all ST parameters.
- Preview before printing.
- Medians refresh: manually adjustable 1 to 8 seconds at 1 second interval.
- Supports arrhythmia detection.



HOLTER

- Stores ECG data of all channels of all beats in selected template.
- Facility to edit arrhythmia type of individual beat.
- View trends of HR, detected arrhythmias, ST level of all channels.
- 10, 20, 30 and 60 minutes disclosure.
- Selection of normal beat automatically or manually.
- Longest SV Tach, longest ST episode, maximum delta ST.



Surgical Imaging & Radiology

Ultrasound



Breast & Skeletal Health

Radiation Protection Products



In Vitro Diagnostics

Consumables & Accessories



Global Footprints

Corporate Offices:

Chennai:

#15, IV Street, Abhiramapuram, Chennai - 600 018.
Ph: +91-44-2498-5050, 4347-7800, Fax : +91-44-2498-5757
Corporate@trivitron.com | www.trivitron.com
www.kiranxray.com | www.labsystemsdx.com

India Offices:

Delhi / NCR:

Priska Pride, A 42/4, 6th Floor, Sector 62, Noida, 201309

Mumbai:

D-117, TTC Industrial Area, Nerul, Navi Mumbai - 400 706.
Ph: +91-22-2768-2211, Fax: +91-22-2767-1790

Chennai:

Trivitron Medical Technology Park, Plot No. A2 & A3,
SIPCOT Industrial Park, Irungattukottai, Sriperumbudur Taluk,
District Kancheepuram, Chennai - 602105

Bengaluru:

#201, Sreenilaya, Ground Floor, 10th D Main, 5th Cross,
Jayanagar 1st Block, Bengaluru - 560 011.
Ph: 080-2656-5491, 4853-7366.

Pune:

Plot No. A102, H Block, MIDC, PIMPRI, Pune - 411 018.

Kolkata:

DBS House, 10/2 Hungerford Street, Kolkata - 700 017.

Vizag:

Biome Building, AMTZ Campus, Nadupuru,
Vishakhapatnam - 530031, Andhra Pradesh India

International Offices:

Dubai:

Trivitron Healthcare Middle East, Gate No. 10, 3rd Floor,
Office #3-D, Hamarain Center, PO Box: 505021. Dubai, UAE.
Ph: +971-42399910, Fax: +971-42397281.
www.trivitronme.com

Trivitron Healthcare Africa, #505, Building No. Ap/26,
Dubai Healthcare City, Dubai, UAE. Ph: +971-42588463.
www.trivitronafrica.com

Kenya:

Trivitron Healthcare Africa (Kenya) Limited - Unit 6, 1st Floor,
Block A, Sameer Business Park, Mombasa Road, Nairobi, Kenya

Uganda:

Trivitron Healthcare Africa (U) SMC Limited, Plot 56 Ntinda 2
Road, Naguru, P.O Box 26775, Kampala, Uganda

Finland:

Labsystems Diagnostics Oy, Tiilitie 3, 01720, Vantaa, Finland,
Tel: +358-20-155-7530 | www.labsystemsdx.com

Turkey:

Bome Trivitron Sanayi Ürünleri DIŞ TİC. A.Ş., Sokullu Mehmet Paşa
Mah. 1361. Sokak, No: 6/A, 06460, Sokullu, Çankaya, Ankara, Türkiye.
Tel: +90-312-479-33-30, Fax: +90-312-479-33-18
www.bometrivitron.com.tr

Austria:

Leberstrasse, 20/2 1110 Vienna, Austria, Europe

USA:

Trivitron Healthcare, 11665 AL Highway 79, Scottsboro, AL 35768, USA.



www.trivitron.com
corporate@trivitron.com

