

SonoRad K9

A Portable & Reliable Color Doppler!
For Your Diagnostic Needs!



Introducing

SonoRad K9

Kiran SonoRad K9 offers Excellent Clinical Value for a wide range of Applications. It enables you to go the extra mile to deliver Care.



User-Friendly Workflow



One Key

To select the desired application with automatic preset



One Key

To optimize the image automatically



One Key

To save still image and CINE loop



One Key

To measure



One Key

To make report

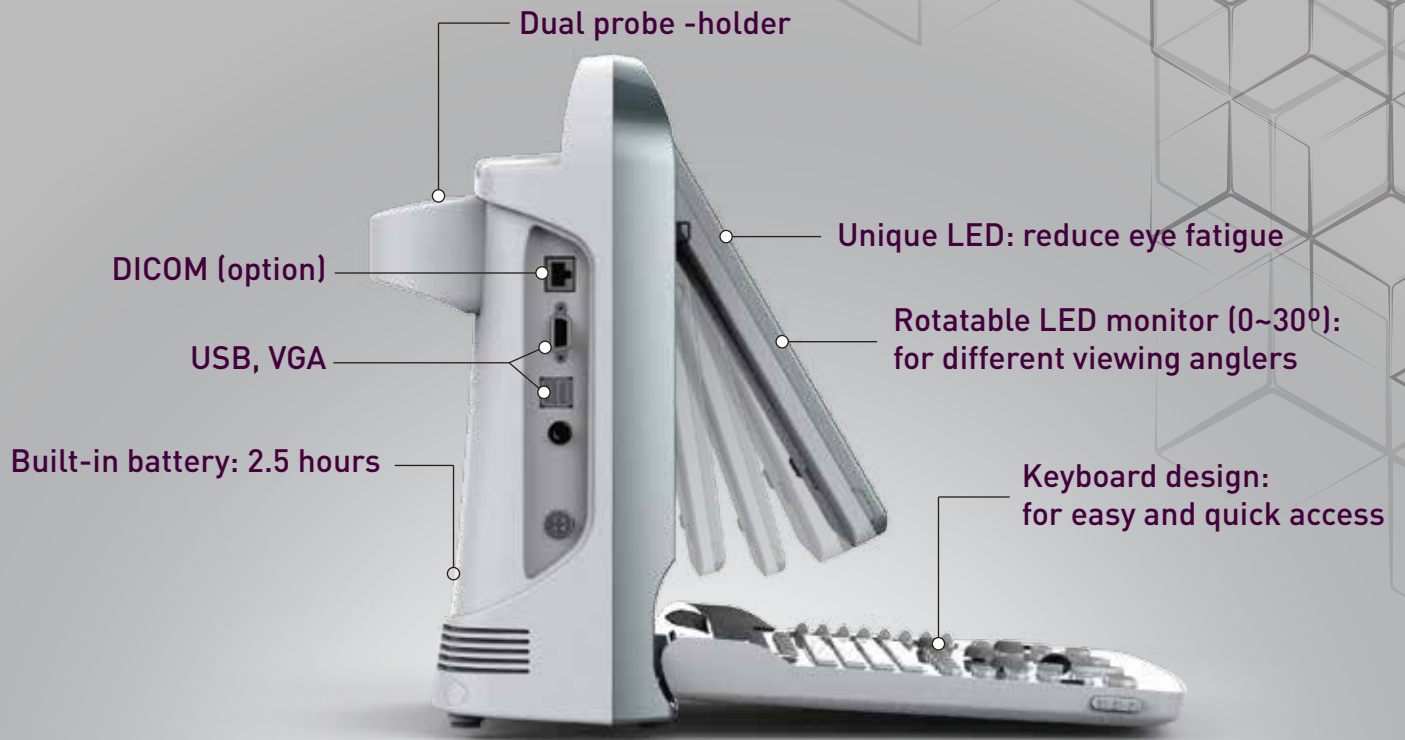


One Key

To print to PC or Video Printer



Excellent Ergonomics



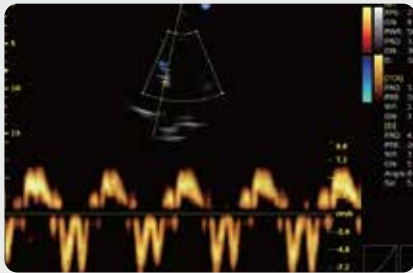
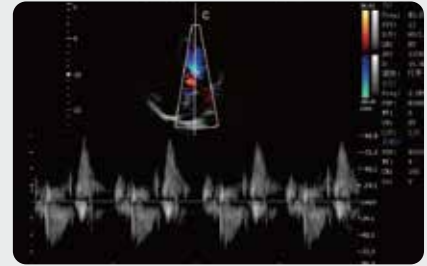
Easy to Carry!



Excellent Clinical Value

Continuous Wave (CW) Doppler

Detect blood flow with high velocity and helps to diagnose with more clinical information.

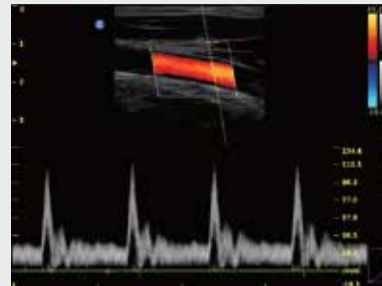


Tissue Doppler Imaging (TDI)

Tissue Doppler imaging is a novel echocardiography technique that directly measures myocardial velocity. Systolic TD measurements assesses left and right ventricular myocardial contractile function. Diastolic TD values reflect myocardial relaxation.

Triplex

Triplex combines B, Color with PW to help the user diagnose more confidently, accurately and helps to improve the efficiency



Auto IMT Function

Automatically traces the intima and measures the thickness of the intima. This allows to measure the intima faster, more easily and more accurately.

Super Needle

With Super Needle, clinicians can see needle inside tissue more clearly during medical procedures with needle angle up to $\pm 30^\circ$

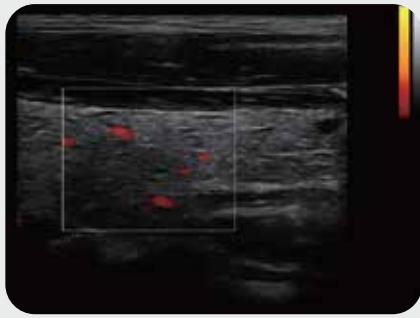


Without Super Needle,
Needle is not clear

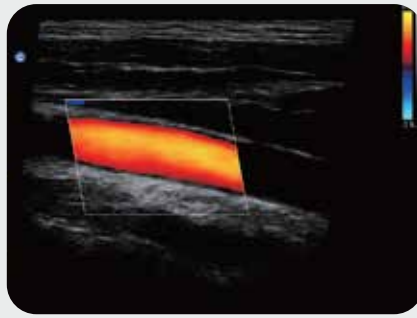


With Super Needle,
Needle is better visualized

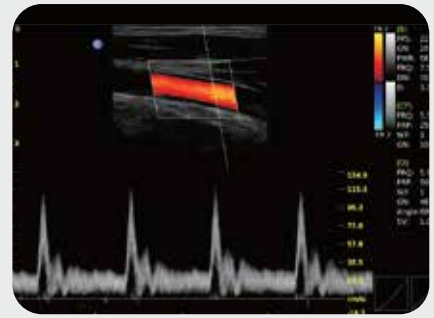
Extraordinary Clinical Value



Thyroid, CPA Mode



Carotid, 2D Steer



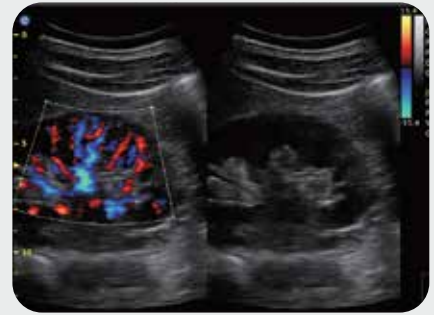
Carotid, Triplex



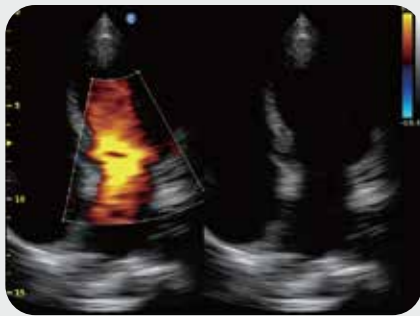
Liver, B Mode



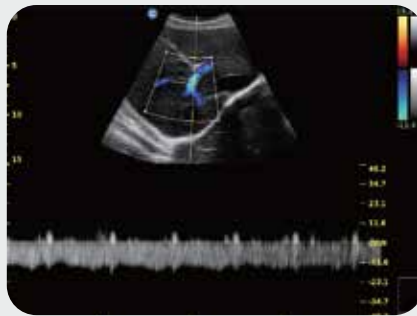
Liver, Color Mode



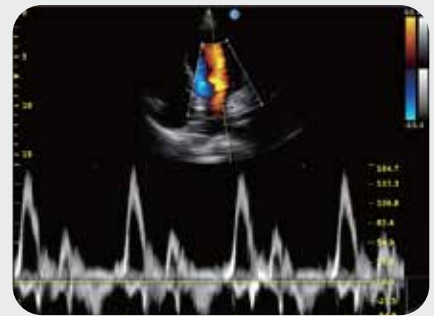
Kidney, B/BC Mode



Cardiac, B/BC Mode



Liver, PW Mode



Cardiac, PW Mode

Wide Range of Probes



2.5 MHz-5.0 MHz Convex
C3-A



5.3 MHz-10.0 MHz Linear
L7M-A



5.3 MHz-11.0 MHz Linear
L7S-A



4.5 MHz-8.0 MHz Transvaginal
V6-A



5.0 MHz-10.0 MHz Trans-Rectal
R7-A



2.5 MHz-4.5 MHz Phased Array
P3-A



2.5 MHz-5.0 MHz Micro-Convex
MC3-A



4.5 MHz-8.0 MHz Micro-Convex
MC6-A

On A **Global Mission** With A **Local Heart**

...Speaking your language in 180 countries



KIRAN^{*}
A Division of TRIVITRON Healthcare

D 117/134, T.T.C. Industrial area,
Nerul, Navi Mumbai - 400706,
Maharashtra, India

www.kiranxray.com | www.trivitron.com

kiran@kiranxray.com

