

# INFINITY C-ARM



**TECHNOLOGY**  
MADE FRIENDLY



**CE1639**

AERB & BIS Approved



## Cutting-Edge Technology

A State-of-the-Art C-Arm system using a high quality Image Intensifier to provide high contrast images. Accurate, Reliable and Durable.

The Infinity C-Arm features an intuitive software for convenient selection from multiple configurations and provides a user friendly keyboard interface at an affordable price point.

Optional High Resolution 32" single monitor with HD Memory





## Functionality

- Mobility in a compact design with intuitive positioning
- Image acquisition-processing-management-storage
- Better view and high quality imaging on LED monitor
- Option - Super Harmonic Controlled Frequency

## Applications

Ortho, Trauma, Spine, Urology etc

## Software

- Storage of Last image and permanent storage of 100 images (optional PC memory & digital processing software )
- Real time image rotation
- High resolution image capture
- Digital zoom
- USB memory stick support for image backup

**Model :** Infinity

**Output power :** 3.5 kW

**Max kV :** 110 kV

Infinity C-Arm High Frequency 3.5 kW

**Memory Unit :** 100 Images permanent Storage with Pen Drive  
& LAN option (optional PC memory)

**Monitors :** High Resolution 17" (2 Nos.)

**Optional item at additional cost :** HD memory with 32 inch monitor

1K x 1K Imaging Chain

High Resolution 19" Monitors (2 Nos.)

**Radiographic Mode & ABS Mode**



- Orbital Movement : 125°
- Free space : 780 mm ( $\pm 10$  mm)
- SID : 980 mm ( $\pm 10$  mm)

- 200 mm ( $\pm 10$  mm) Horizontal C-Arm run, with manual brake for locking



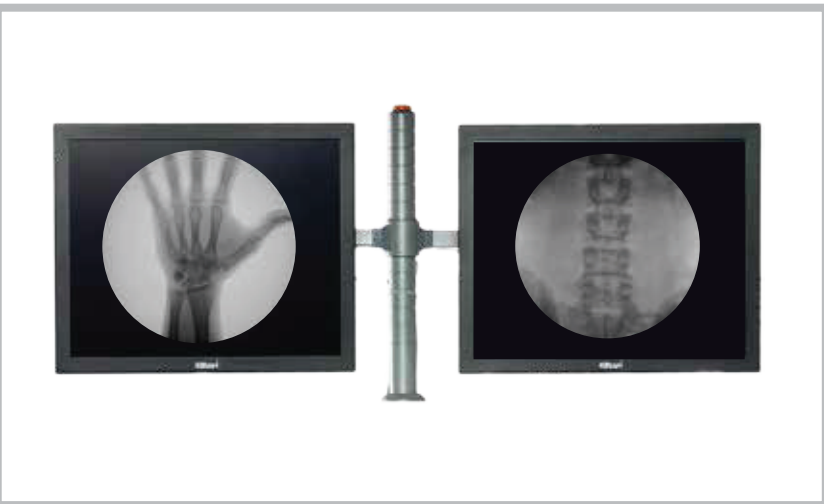
- 270° C-Arm rotation on each side, with manual brake for locking

- 12.5° ( $\pm 1^\circ$ ) C-Arm Swivel on each side with manual brake for locking





- Wide coverage with 9" image intensifier
- Excellent image quality – Use of 103 L / inch, 8:1 anti-scatter grid (SID=98 cm, Dia=9 inch)



- Display of live image with "Last Image Hold" feature
- Image post processing for live / stored images
- User selectable brightness, contrast for displayed images



- Stationary Anode



User friendly, intuitive keypad with displays with advanced features for wider clinical applications

- Pulse Fluoroscopy
- Low Dose Fluoroscopy
- Boost Fluoroscopy
- Single shot Fluoroscopy

Also has control and display for self-diagnostic maintenance and software for online support



# TRIVITRON

HEALTHCARE

*speaking your language*

[www.trivitron.com](http://www.trivitron.com) | [leads@trivitron.com](mailto:leads@trivitron.com)  
[www.kiranxray.com](http://www.kiranxray.com)

Reach us at: +91 98400 80008

