



## **NeoNat SMA Real-Time PCR Kit**

Semi-quantitative detection of  
*SMN1* and *SMN2*

## NeoNat SMA Real-Time PCR Kit

Spinal Muscular Atrophy (SMA) is the second most common autosomal recessive disorder which is characterized by the loss of motor function and muscle mass due to degeneration of neurons in the spinal cord and the brain stem. LabSystems Diagnostics NeoNat SMA is a Real-Time PCR kit for the screening of SMA by measuring *SMN1* (Survival Motor Neuron 1), and *SMN2* (Survival Motor Neuron 2) in neonates by extracting DNA from dried blood spot samples.

### Assay Features

- Conserved region of the genes are targeted
- DBS calibrators and controls included in the kit
- Ready to use reaction mix
- 100 % specificity and sensitivity



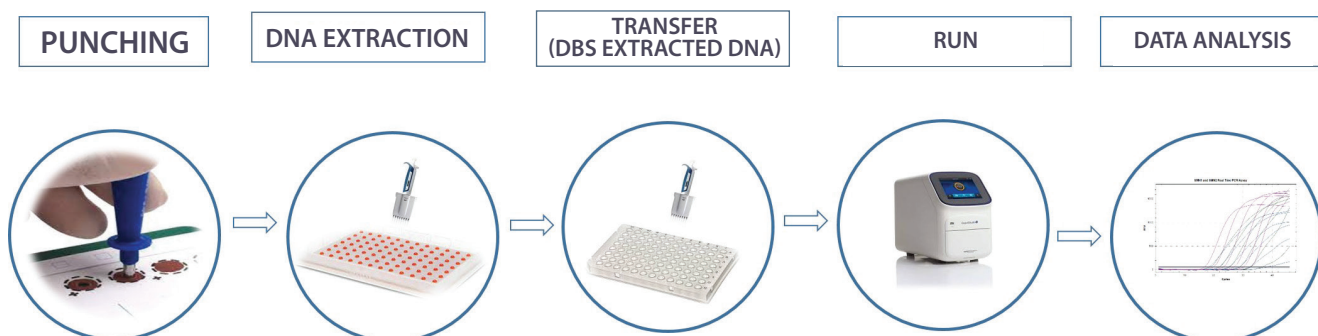
### Test Design

- Kit is Based on 5' nuclease technique
- Detects three genes: *SMN1*, *SMN2* and  $\beta$ -globin genes (internal control).

### Compatibility

- Kit is compatible with most Real-Time PCR instruments in the market with atleast three measurement channels (Fam, VIC/ HEX and CY5)
- Developed and validated with Biorad -CFX96 and ThermoFisher-Quantstudio 5 & 6.

### Workflow



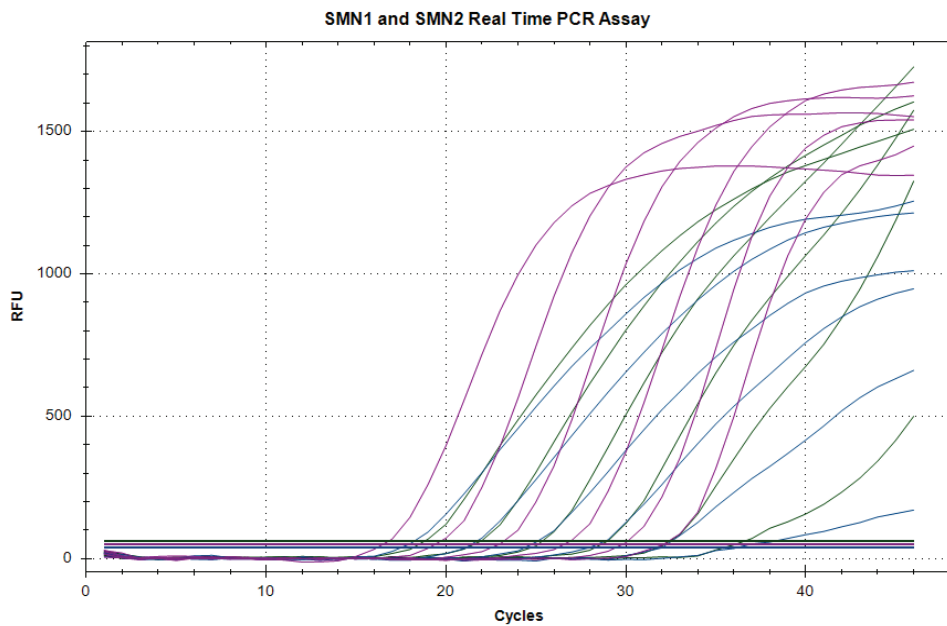
## Performance

- Quick turnaround time of 1.5 hours
- Simple procedure from punching to data analysis
- High linearity and PCR efficiency

## Genes Targeted

Targets	Detection Channels
<i>SMN1</i> (Survival Motor Neuron 1)	FAM
<i>SMN2</i> (Survival Motor Neuron 1)	VIC / HEX
$\beta$ -Globin (Internal control)	CY5

## Assay result and performance



## Limit of Detection

- *SMN1* & *SMN2* - 1.2 & 2.4 copies/ $\mu$ l

## Ordering Information

Product Code	Format
8100461	96 reactions
8100462	192 reactions
8100463	480 reactions



**LABSYSTEMS**  
**DIAGNOSTICS**  
*speaking your language*

**Labsystems Diagnostics Oy**

Tiilitie 3, 01720 Vantaa,  
Finland

Phone: +358 20 155 7530

Fax: +358 20 155 7521

[www.labsystemsdx.com](http://www.labsystemsdx.com)

[sales@labsystemsdx.com](mailto:sales@labsystemsdx.com)