



## **NeoNat SCID-SMA Real-Time PCR Kit**

Semi-quantitative detection of *TREC*, *KREC*,  
*SMN1* and *SMN2*

# NeoNat SCID-SMA REAL-TIME PCR KIT

The NeoNat SCID-SMA is a Real-Time PCR assay for screening Severe Combined Immunodeficiency (SCID) Syndrome and Spinal Muscular Atrophy (SMA) in newborns DNA from Dried Blood Spot (DBS) samples.

## Assay Features

- NeoNat SCID-SMA Real-Time PCR kit is based on 5' nuclease technique
- Greater flexibility with separate multiplexing of SCID and SMA from one kit
- Kit contains all the reagents and components to perform DNA extraction from DBS
- Ready to use reaction mix and calibrators preloaded plates
- Four levels of DBS controls with defined target gene copies per  $\mu\text{L}$

## Performance

- Excellent performance with 100% sensitivity and specificity
- Limit of detection of  $<5.0$  copies/ $\mu\text{L}$  for *TREC* & *KREC* and  $<2.5$  copies/ $\mu\text{L}$  for *SMN1* & *SMN2*
- Short turnaround time of  $\sim 120$  mins from DNA extraction to result analysis

## Compatibility

- Compatible with most real-time PCR instruments with at least three measurement channels
- Developed and validated with Biorad CFX 96 and ThermoFisher Quantstudio 5 & 6.

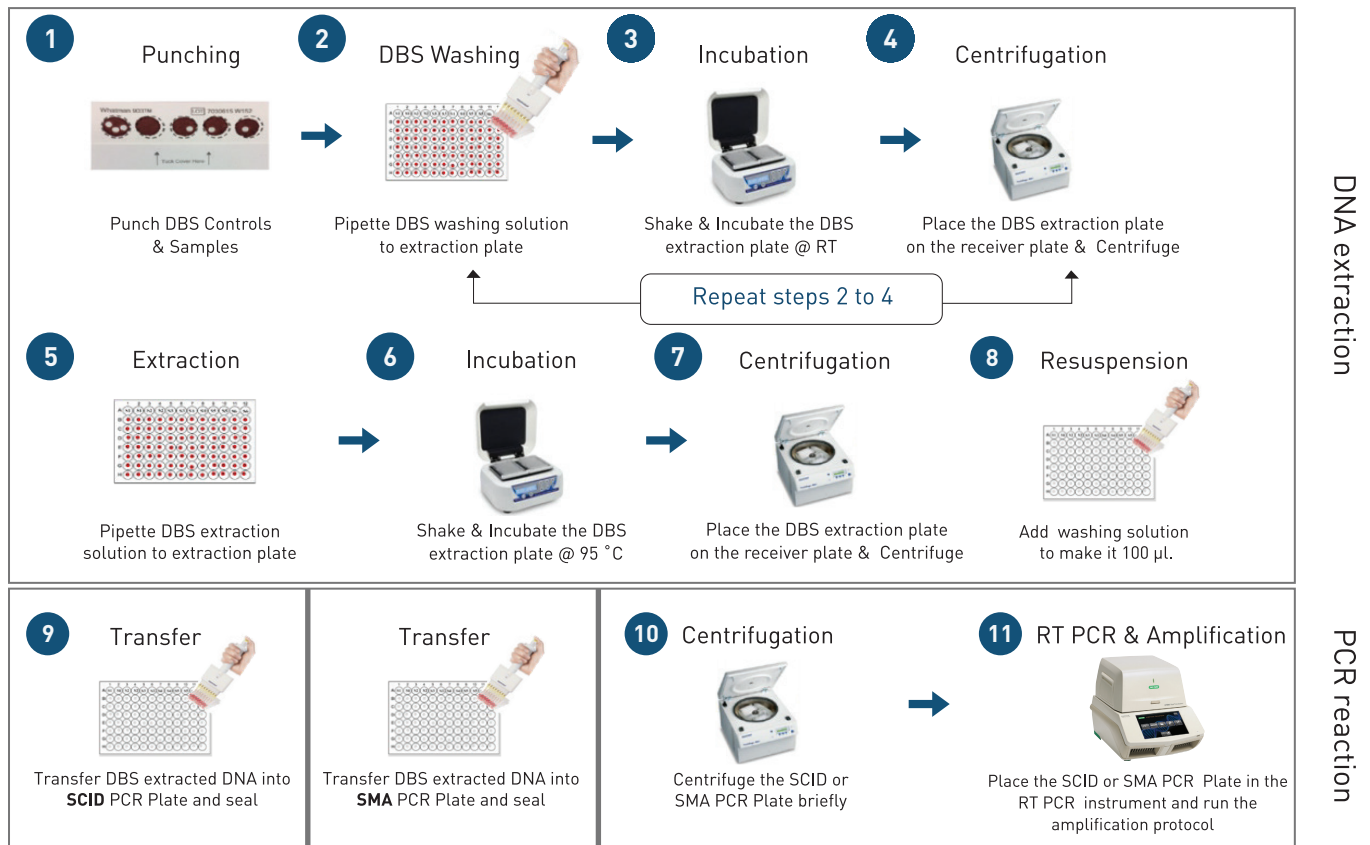


## Genes Targeted

- Individual amplification of multiple targets

Targets	Detection Channels
<i>TREC</i> (T-cell Receptor Excision Circle)	FAM
<i>KREC</i> (Kappa-deleting Recombination Excision Circle)	VIC / HEX
<i>SMN1</i> (Survival Motor Neuron 1)	FAM
<i>SMN2</i> (Survival Motor Neuron 1)	VIC / HEX
$\beta$ -Globin (Internal control)	CY5

## DNA Extraction from DBS & PCR Setup



## Ordering Information

Product Code	Format
8100481	96 reactions
8100482	192 reactions
8100483	480 reactions



**LABSYSTEMS**  
D I A G N O S T I C S  
*speaking your language*

**Labsystems Diagnostics Oy**

Tiilitie 3, 01720 Vantaa,  
Finland

Phone: +358 20 155 7530

Fax: +358 20 155 7521

[www.labsystemsdx.com](http://www.labsystemsdx.com)

[sales@labsystemsdx.com](mailto:sales@labsystemsdx.com)