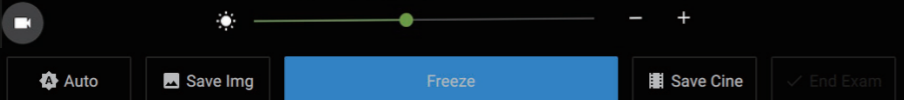
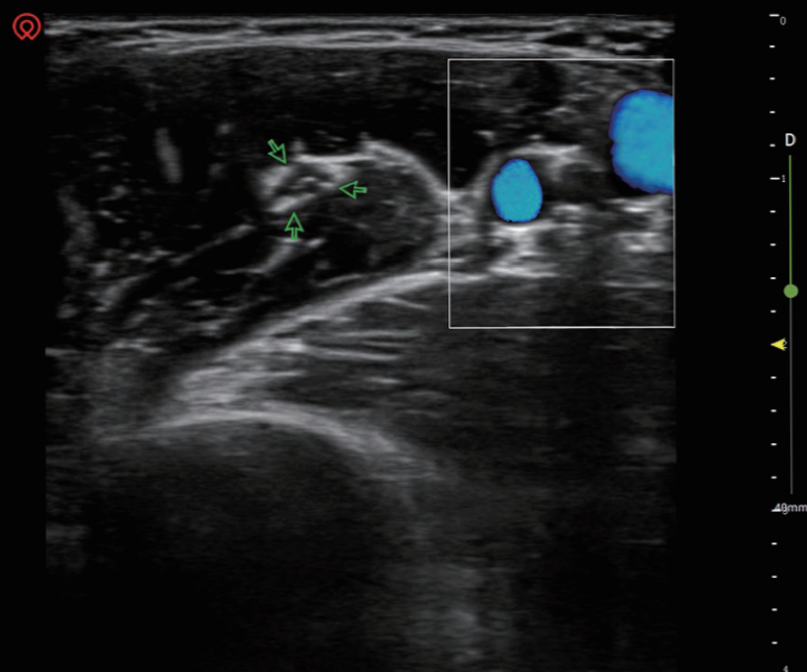




Navi Series

PREMIUM POINT-OF-CARE ULTRASOUND FOR ANESTHESIA
AND PAIN MANAGEMENT

A Vision For Precise Navigation



Ultrasound Guidance

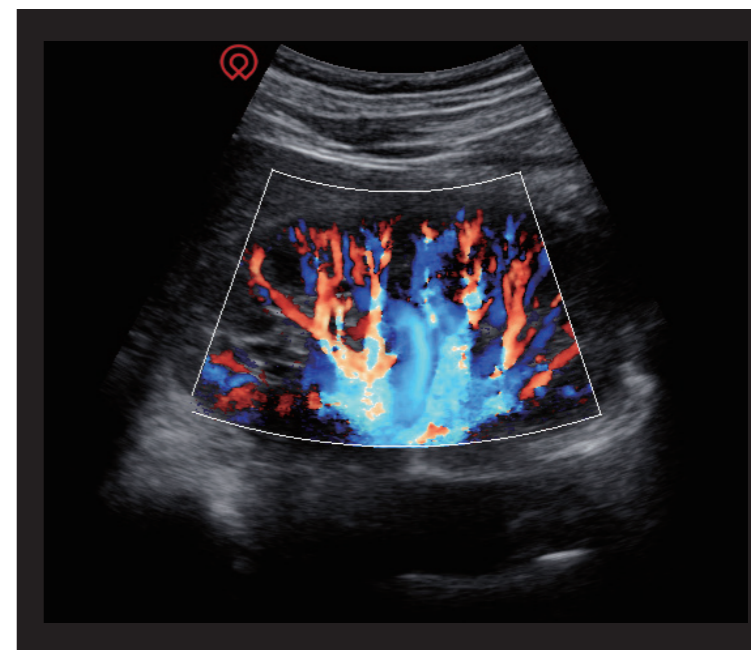
wisonic

Precise Navigation

Navi was inspired to assist doctors in their daily challenging cases.

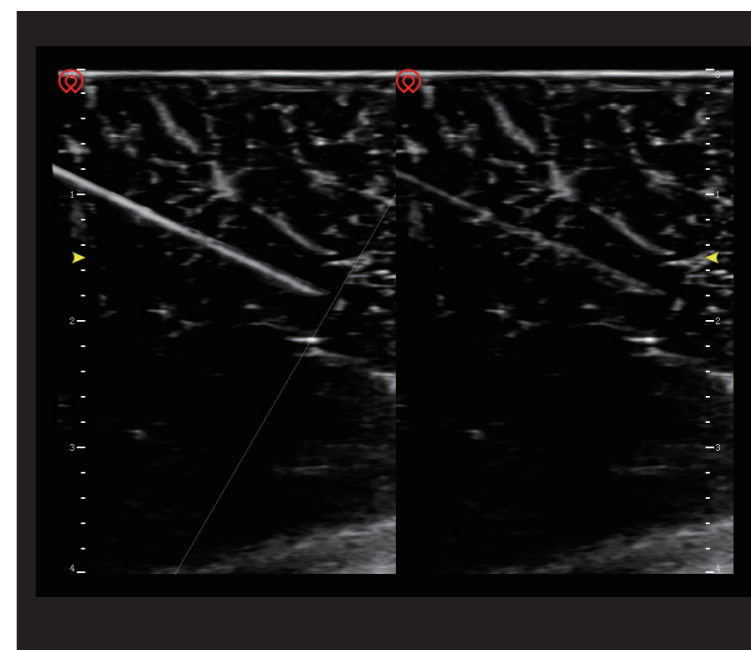
Best in Detail Tissue Imaging

Navi was built on a Holo Platform, which has a 64-beam processor and archives up to 5000 frames per second. Along with the fine image tuning according to specific user requests, the Navi is able to provide whole field best detail image quality and outstanding resolution.



Remarkable Needle Recognition wiNeedle Intelligent Needle Visualization Technology

- The most challenging work during nerve block procedures is distinguishing the needle from the tissue.
- Navi answers this by providing a very intelligent wiNeedle feature.
- WiNeedle utilises 3rd generation needle visualisation technology to automatically recognise the needle being introduced to the tissue. This greatly enhances the appearance of the needle to make needle guidance as easy as possible.



Professional Application

Focusing on every detail of machine design, our experts have endeavoured to make Navi the simplest to use ultrasound on the market. Navi is designed to be indispensable as previously difficult tasks become routine with sight. "Seeing is believing" and with the Navi there will be no more stabbing in the dark.

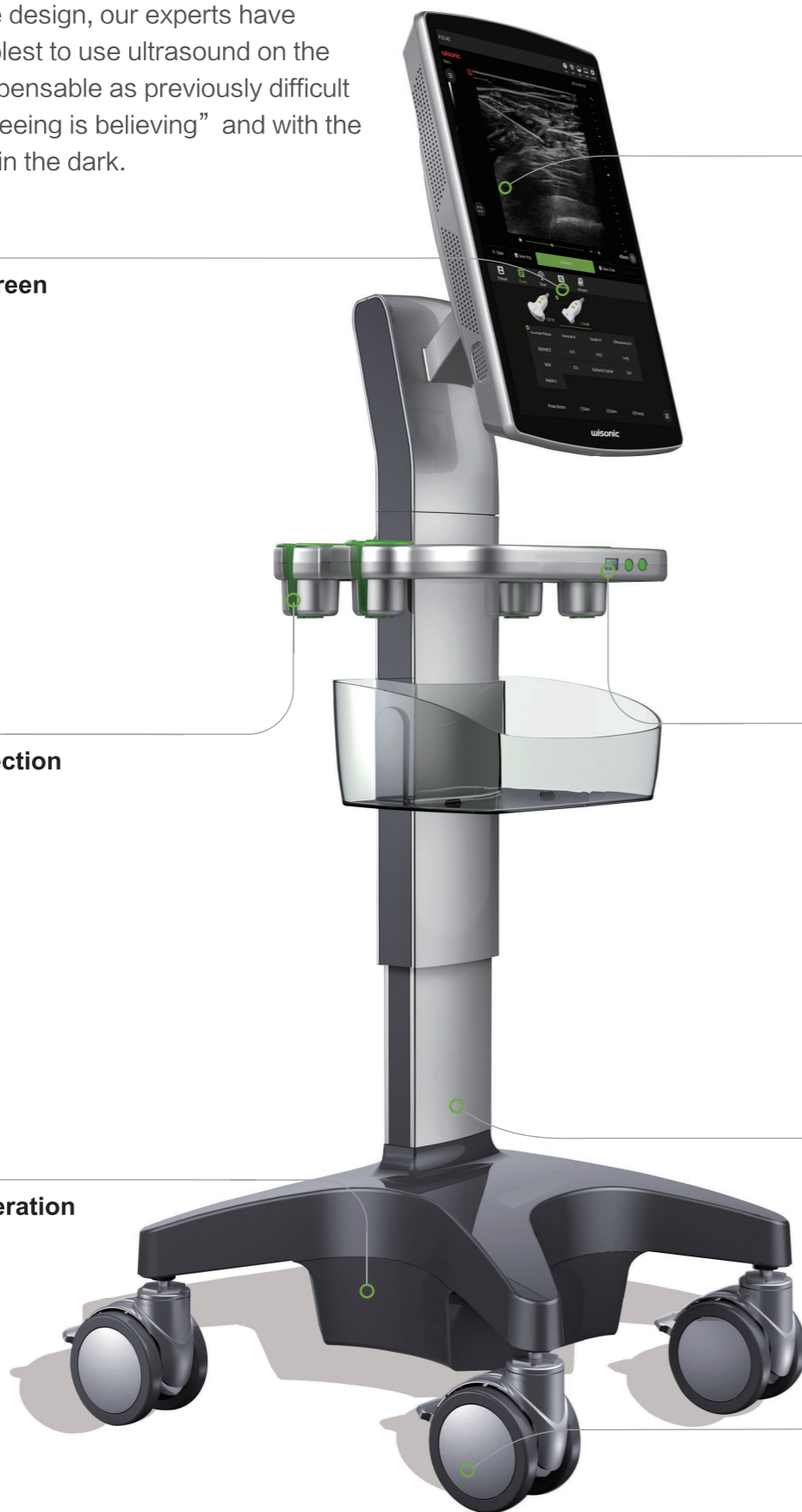
19-inch Industry Largest Touch Screen



Dedicated Probe Holder for Disinfection



7 Hours Battery for Whole Day Operation

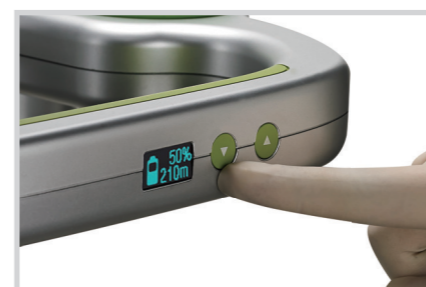


wiLearn Education Center

Developed for improving anesthesiology education cost, wiLearn covers most procedures you come across every day.



Battery Duration Time Display



Electric Height Adjustable

Large Wheel



Comprehensive Range of Applications

The wide range of transducers available means you will never be limited to applications, from large patients to the smallest of paediatrics - the Navi can do it all.

The innovative mid-line design along with the project probe direction indicator provides outstanding accuracy and best user experience.

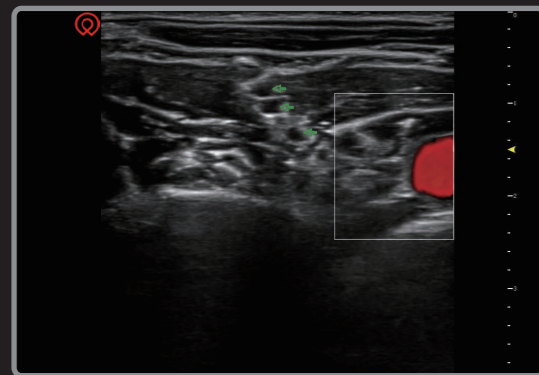
Probe Button

Smart-design button on both sides of probe, allows user to readily interact with the system by freeing both occupied hands.

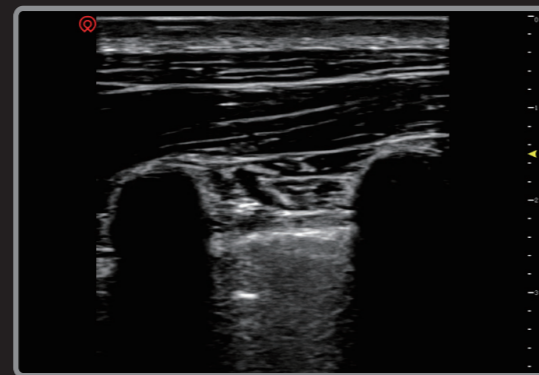


Hockey Stick Probe

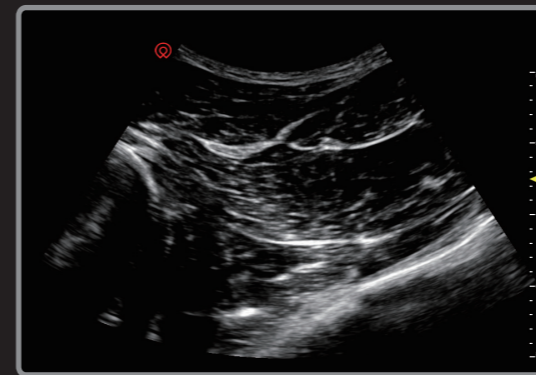
A dedicated probe for distal extremity use, with very high frequency and light weight design, it is a perfect tool for excellent detail imaging and limited space operation.



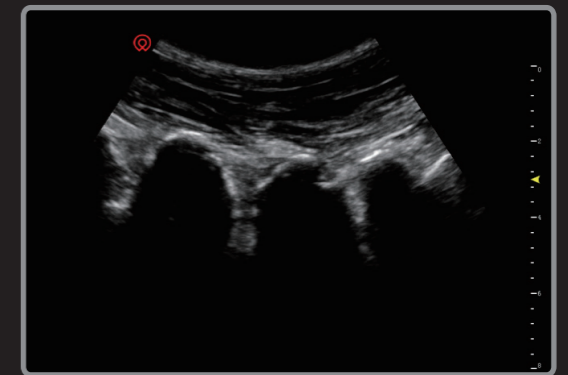
Brachial Plexus



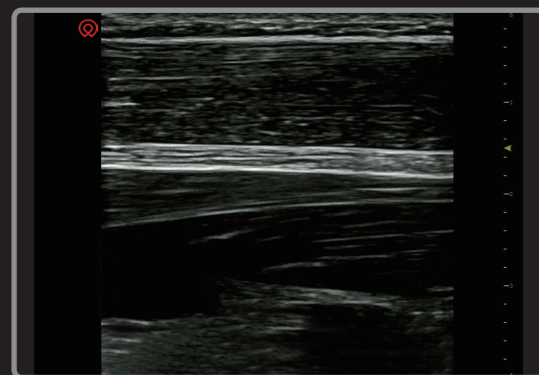
Intercostal Nerve



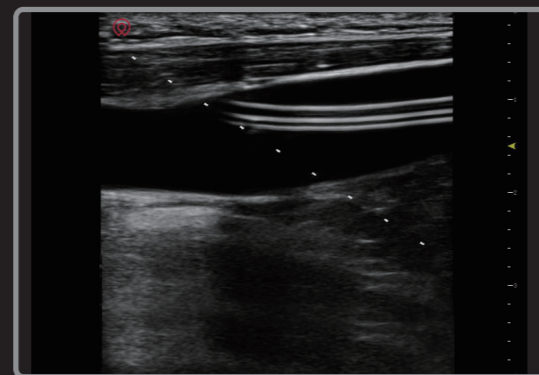
Sciatic Nerve



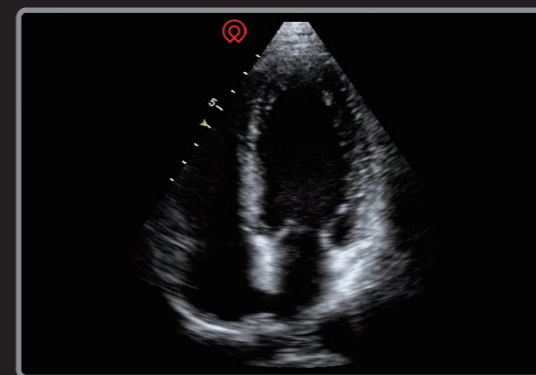
Vertebral



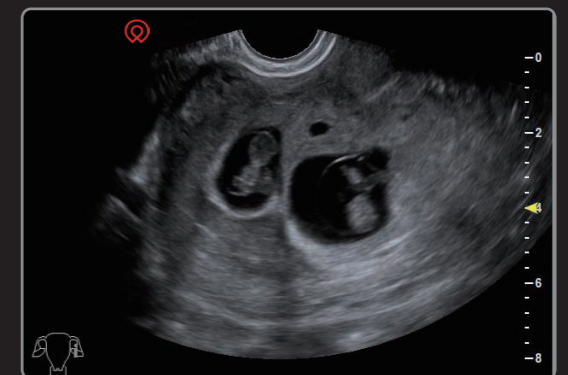
Median Nerve



CVC



Heart 4-Chamber



Twin Pregnancy

TRIVITRON

H E A L T H C A R E

speaking your language

Reach us at: +91 98400 80008
corporate@trivitron.com | www.trivitron.com

