

# K2 VET

A Portable & Reliable Ultrasound  
for Veterinary Applications!



# User-friendly and Modern Design



12 inch rotatable LED monitor (0~30°)  
with different viewing angles



Vehicle Power Charger\*



One Key to Save



Water-Proof Keyboard Cover\*



DICOM 3.0\*, USB



Ultra-compact



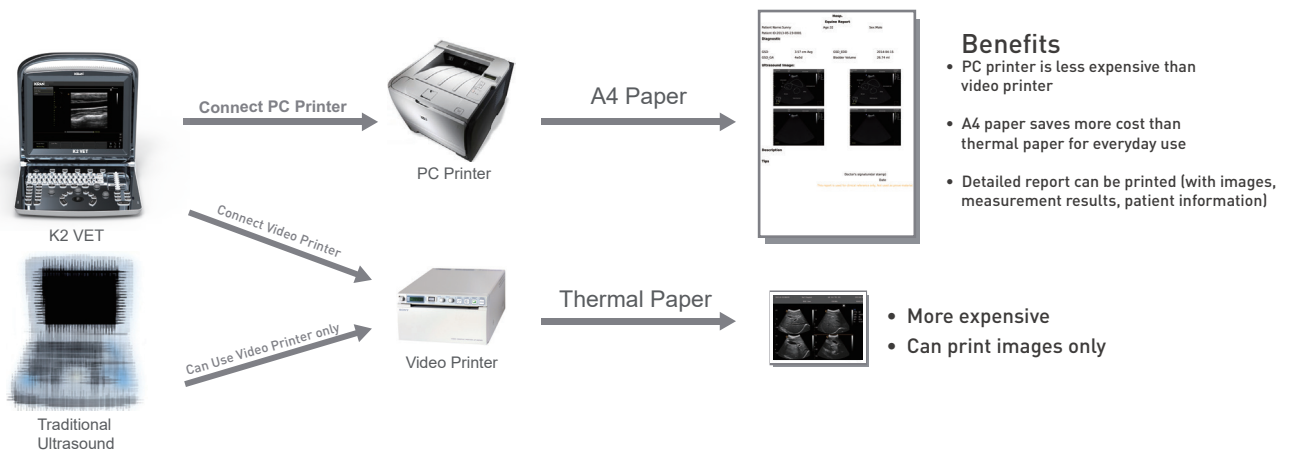
Clips for quick access  
(CINE, Still images)



Carrying Case\*

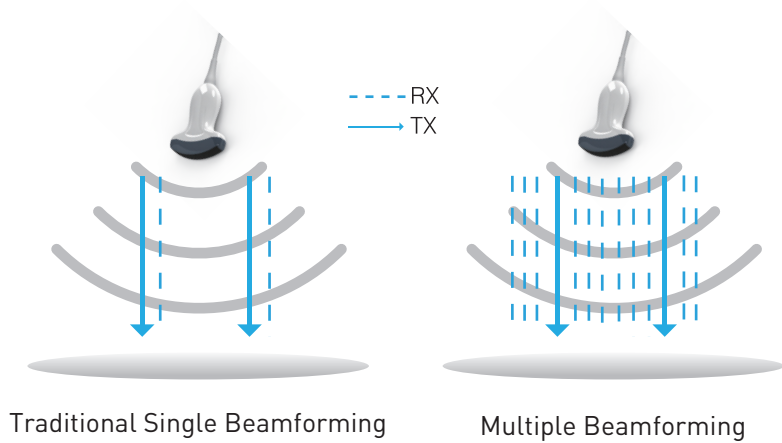


## Support PC Printer



## Multiple Beamforming Technology

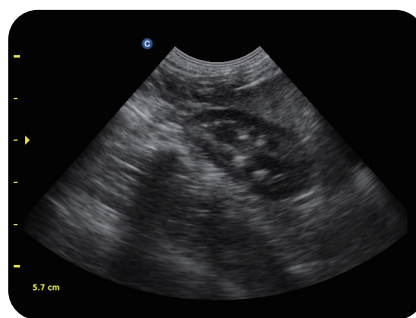
- Enhance Frame Rate
- Improve Image Resolution



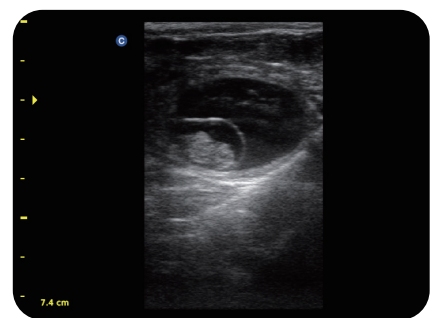
## Excellent Image Quality



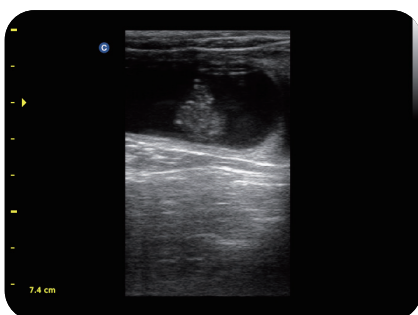
Late Pregnancy of Bovine



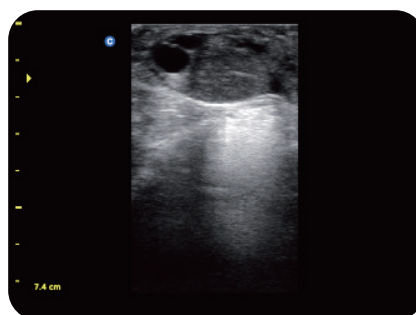
Canine Kidney



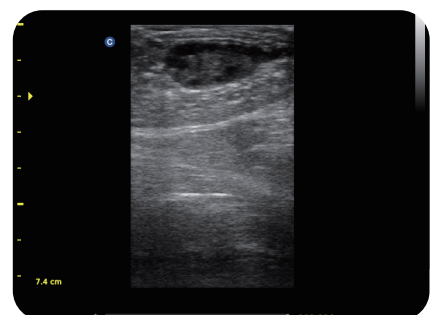
Bovine Pregnancy



Early Pregnancy of Bovine



Bovine Follicle



Bovine Ovary

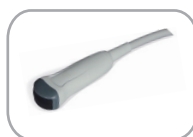
# Technical Specifications

<b>Applications</b>	Large animal: Reproduction, Tendon Small animal: Abdomen, Small parts, Basic cardiology
<b>Display Modes</b>	B, B/B, 4B, M, B/M
<b>Gray Scale</b>	256 Levels
<b>Probe Frequency</b>	2.5 MHz - 11 MHz (Depends on the probe types)
<b>No.of Probe Connectors</b>	One Connector (Standard)
<b>Cine Loop</b>	256 Frames
<b>Zoom</b>	PIP Zoom & Pan Zoom
<b>Software Packages</b>	Canine: GS, CRL, HD, BD   Feline: HD, BD   Equine: GS   Bovine: BPD, CRL, Trunk Diameter   Ovine: BPD, CRL, Trunk Diameter
<b>General Measurements</b>	B mode: distance, circumference, area, volume, ratio, angle, % stenosis, histogram, profile etc. M mode: distance, time, velocity, heart rate etc.
<b>Archives Management</b>	Patient information management, Patient images record, Patient exam report
<b>Power Supply</b>	AC 240V-100V, 50 Hz-60 Hz
<b>Optional</b>	2 <sup>nd</sup> probe connector, Built-in Battery, DICOM 3.0, Water-Proof keyboard cover, Carry case (BG-100), Support PC Printer, TR 9000

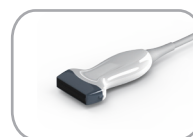
## Wide Range of Probes



5.0 - 10.0 MHz  
Linear Rectal L7V-A



4.5 - 8.0 MHz  
Micro-Convex MC6-A



5.3 - 10.0 MHz  
Linear L7M-A



5.3 - 11.0 MHz  
Linear L7S-A



5.0 -10.0 MHz  
Trans-Rectal R7-A



2.5 - 5.0 MHz  
Micro-Convex MC3-A



4.0 - 7.0 MHz  
Micro-Convex MC5V-A



2.5 - 5.0 MHz  
Convex C3-A

\*Optional

\*\*Please note: Product specifications are subject to change without prior notice owing to product modifications, improvements / up-gradation.