

K2

**A Portable & Reliable Ultrasound
For Your Diagnostic Needs!**



User-friendly and Modern Design



12 inch rotatable LED monitor (0~30°)
with different viewing angles



Vehicle Power Charger*



One Key to Save



Water-Proof Keyboard Cover*



DICOM 3.0*, USB



Ultra-compact



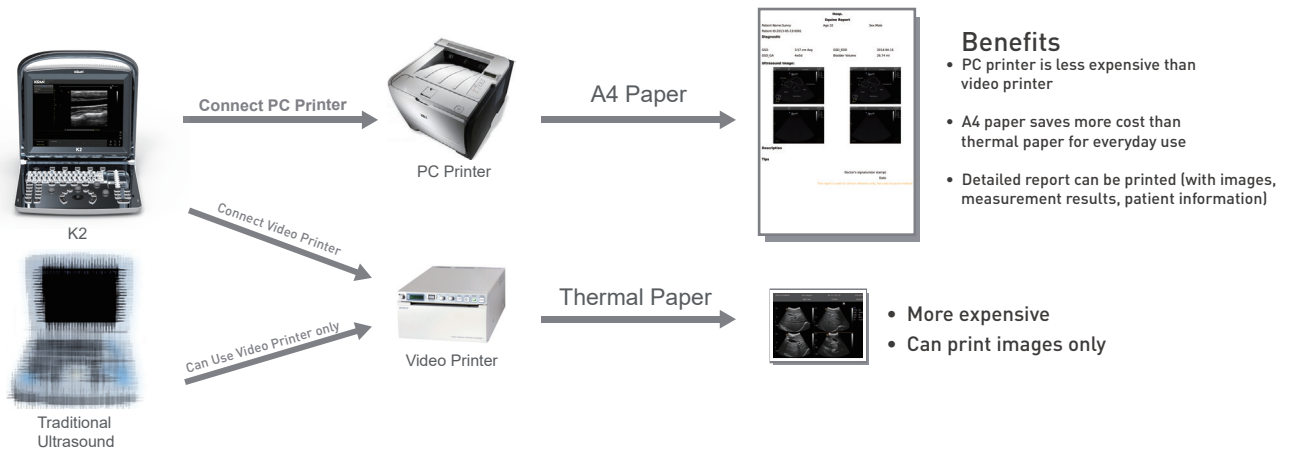
Clips for quick access
(CINE, Still images)



Carrying Case*

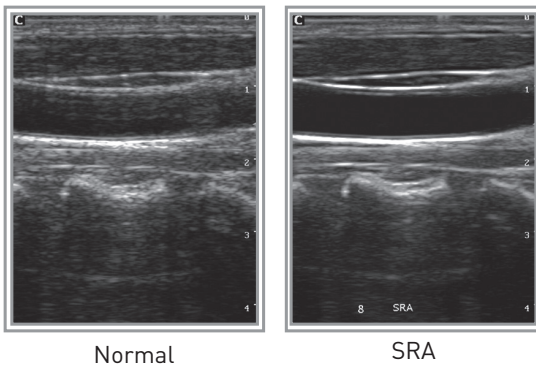


Support PC Printer



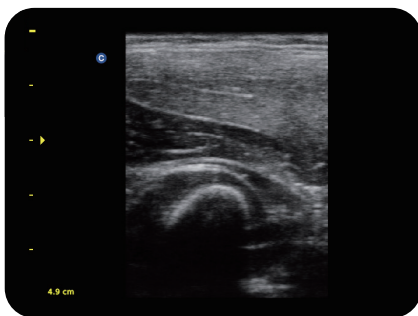
Advanced Technologies

Speckle Reduction Algorithm(SRA)

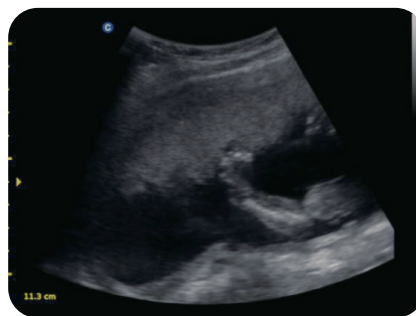


SRA is a technique that uses variety of de-noising algorithms to suppress speckle, smoothens the tissue images and make the edges more visible.

Excellent image quality



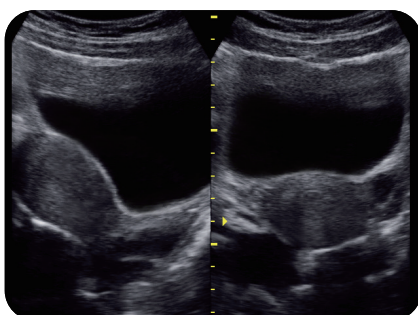
Elbow Joint, B Mode



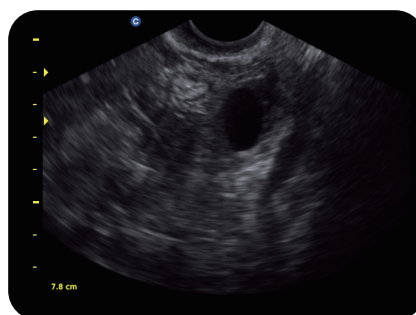
Fetal Hand, B Mode



Fetal Head, B Mode



Uterus, 2B Mode



Follicle, B Mode



Kidney, B Mode

Specifications

Applications	Abdominal, OB/GYN, Urology, Paediatric, Small Organs, Cardiac, Peripheral Vascular, Musculoskeletal
Display Modes	B, B/B, 4B, M, B/M
Zoom	PIP Zoom & Pan Zoom
Advanced Technologies	THI, i-Image, SRA, Compound
Option	2 nd Probe Connector, DICOM 3.0, Water-proof keyboard Cover, Carrying Case (BG-100), Support PC Printer, TR 9000, Built-in Battery

Wide Range of Probes



2.5 MHz-5.0 MHz Convex
C3-A



5.3 MHz-10.0 MHz Linear
L7M-A



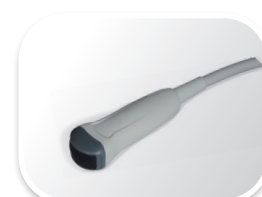
5.3 MHz-11.0 MHz Linear
L7S-A



2.5 MHz-5.0 MHz Micro-Convex
MC3-A



4.5 MHz-8.0 MHz Transvaginal
V6-A



4.5 MHz-8.0 MHz Micro-Convex
MC6-A

*Optional

**Please note: Product specifications are subject to change without prior notice owing to product modifications, improvements / up-gradation.